

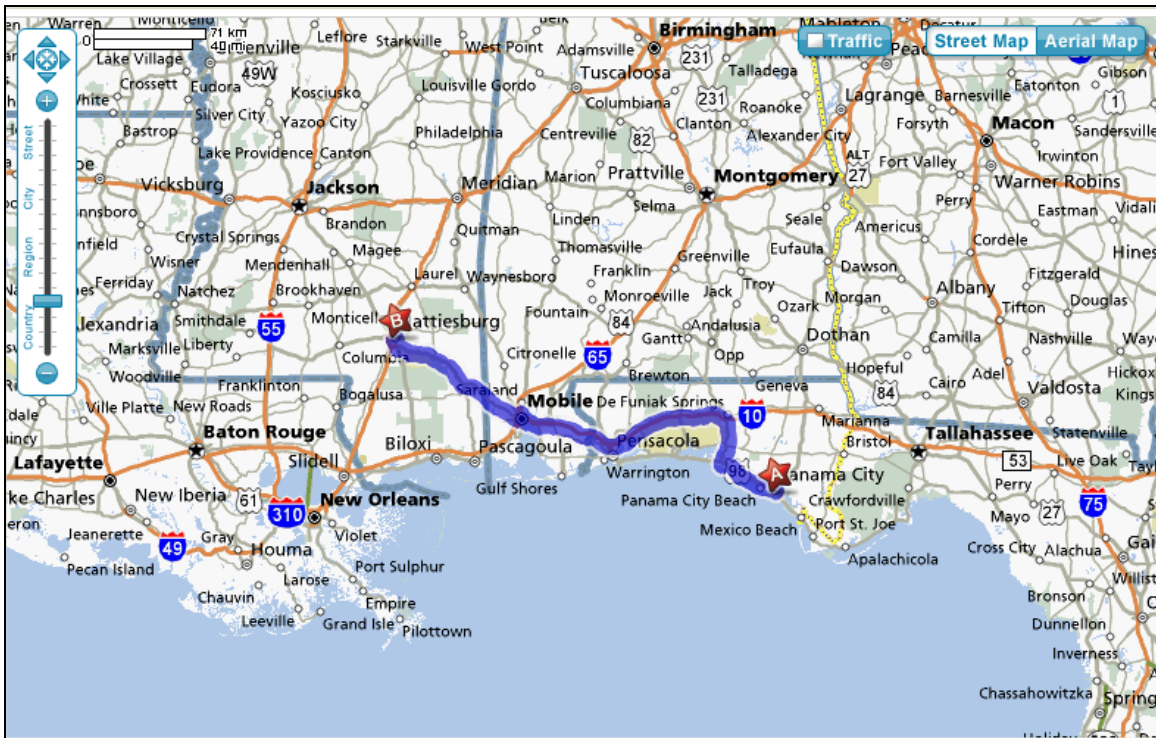
Updated 3-Dec-08, See Below

CoB Pathfinders

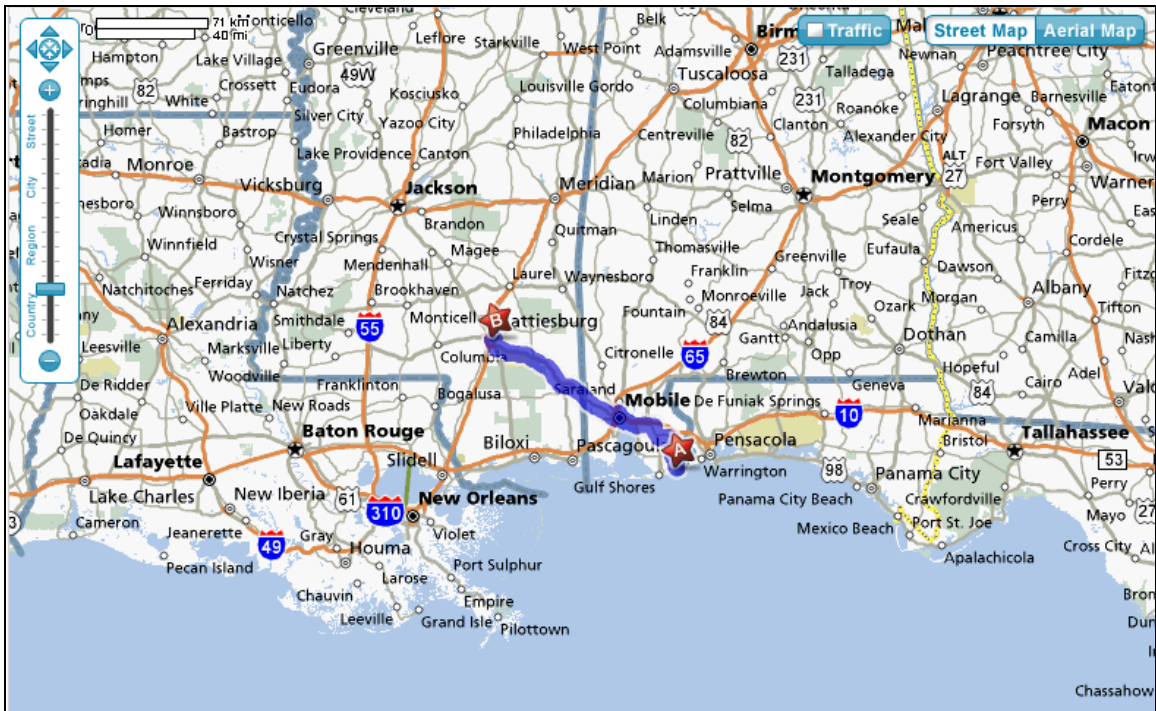
How Residency Decisions are making the CoB Bush League

The fact that various CoB faculty are living outside the borders of Mississippi is now well known. In recent years, various CoB faculty have maintained permanent residences in Alabama, Florida and Louisiana. One of these, accounting professor Charles Jordan, maintains a permanent residence in Panama City, Florida, a fact that was [highlighted](#) in a recent **Breaking News** story about Mary Anderson. Others who have made, or continue to make, at least weekly journeys in recent months are economist William Gunther and assistant professor of international business John Lambert.

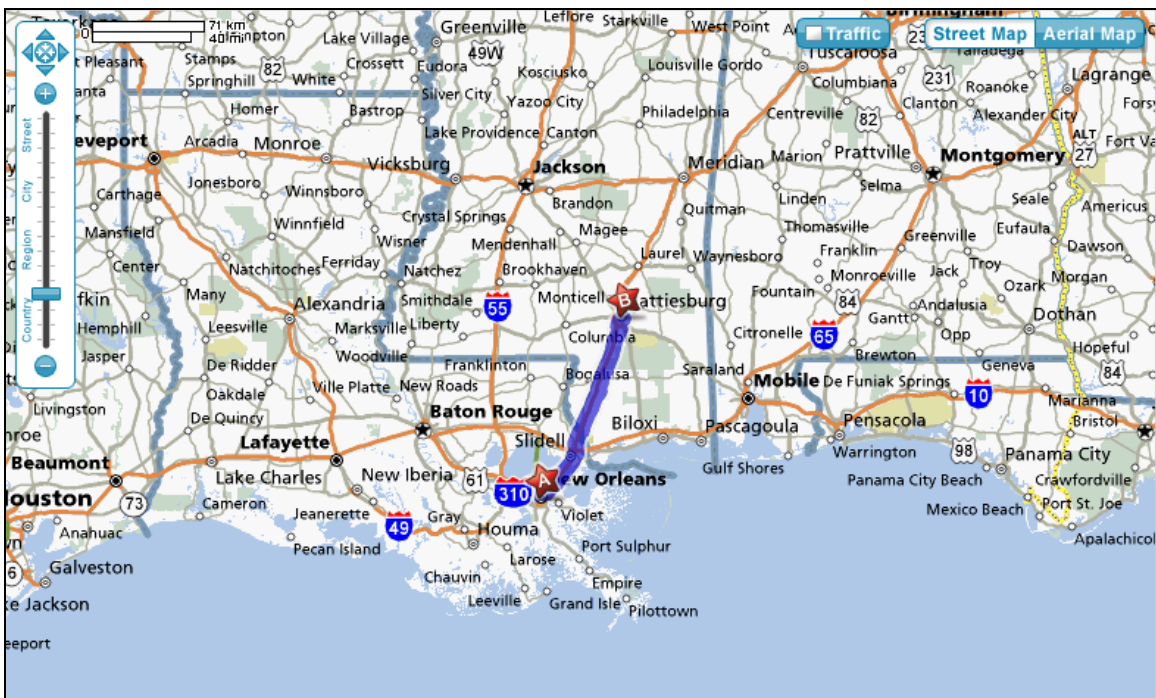
Jordan's trek is shown below, courtesy of mapquest.com. It depicts the path between Hattiesburg, MS, and Panama City, FL.



A round-trip between H and PC extends 570 miles, which, at 65 mph, would take 8hrs and 46mins to make. This is the equivalent of a long day at work for many. Gunther's trip from Josephine, AL, to Hattiesburg and back is 304 miles in length. That trip is shown below.



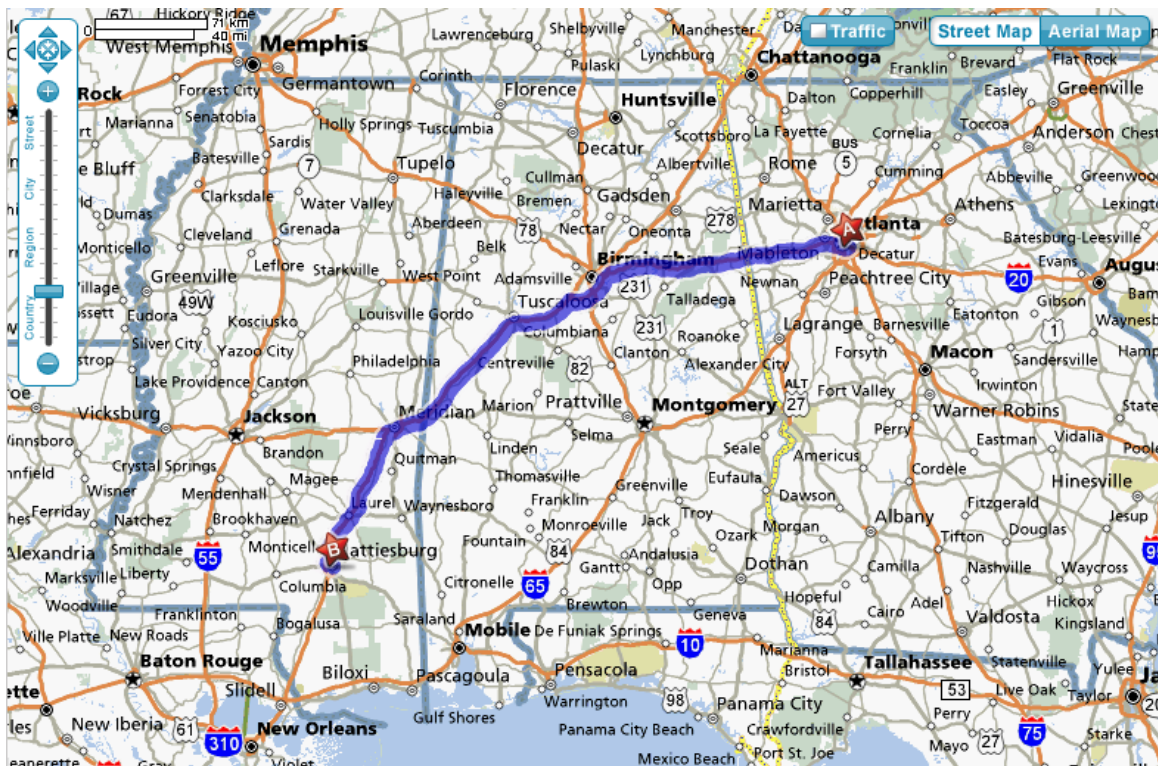
Again at 65 mph, this round-trip would consume 4hrs and 41mins, the better part of a long work day. Finally, Lambert’s trip between New Orleans and Hattiesburg is 222 miles (both ways). This trip, which is shown below, would require 3hrs and 25mins (at 65 mph), almost one-half of a work day. According to sources, Lambert has made this trip on multiple occasions per week in the past.



As has been well documented here at USMNEWS.net, the CoB is facing great difficulties in getting academic research in an adequate quantity and quality from its current faculty base. This has been particularly true in accounting, where Jordan is located, and in international business, which has fallen off of the proverbial map with hiring of Lambert to replace the loss of former CoB faculty Len Trevino and Linghui Tang. In the words of sources, the residency practices of various CoB faculty have contributed to the bush league reputation that the CoB has picked up since the arrival of Harold Doty (former dean) in 2003.

Updated 3-Dec-08

A number of USMNEWS.net readers have relayed us that associate professor of accounting Robert Smith maintains a permanent residence in Atlanta, GA. The trip between Atlanta and Hattiesburg, which is shown below (courtesy of mapquest.com), is 760 miles both ways. Thus, at 65 mph this round trip consumes up to 11hrs and 42 minutes of Smith's time each week. That about 1.5 work days lost.



Again, as part of the CoB's accounting faculty Smith's decision here is imposing a cost on the CoB that it cannot afford, at least not according to its AACSB Peer Review Team, which noted a serious lack of intellectual activity in the CoB's accounting unit.